

# STATIC LINES



---

Kattsafe static line is a proprietary fall arrest system suitable for multiple users, providing a high level of safety for workmen and maintenance personnel requiring safe access to plant and equipment.



---

**Product brochure**  
Static line



---

**Installation manual**  
Static line



---

**Operation manual**  
Static line

Find all related products and resources on our website  
[kattsafe.com.au](http://kattsafe.com.au)

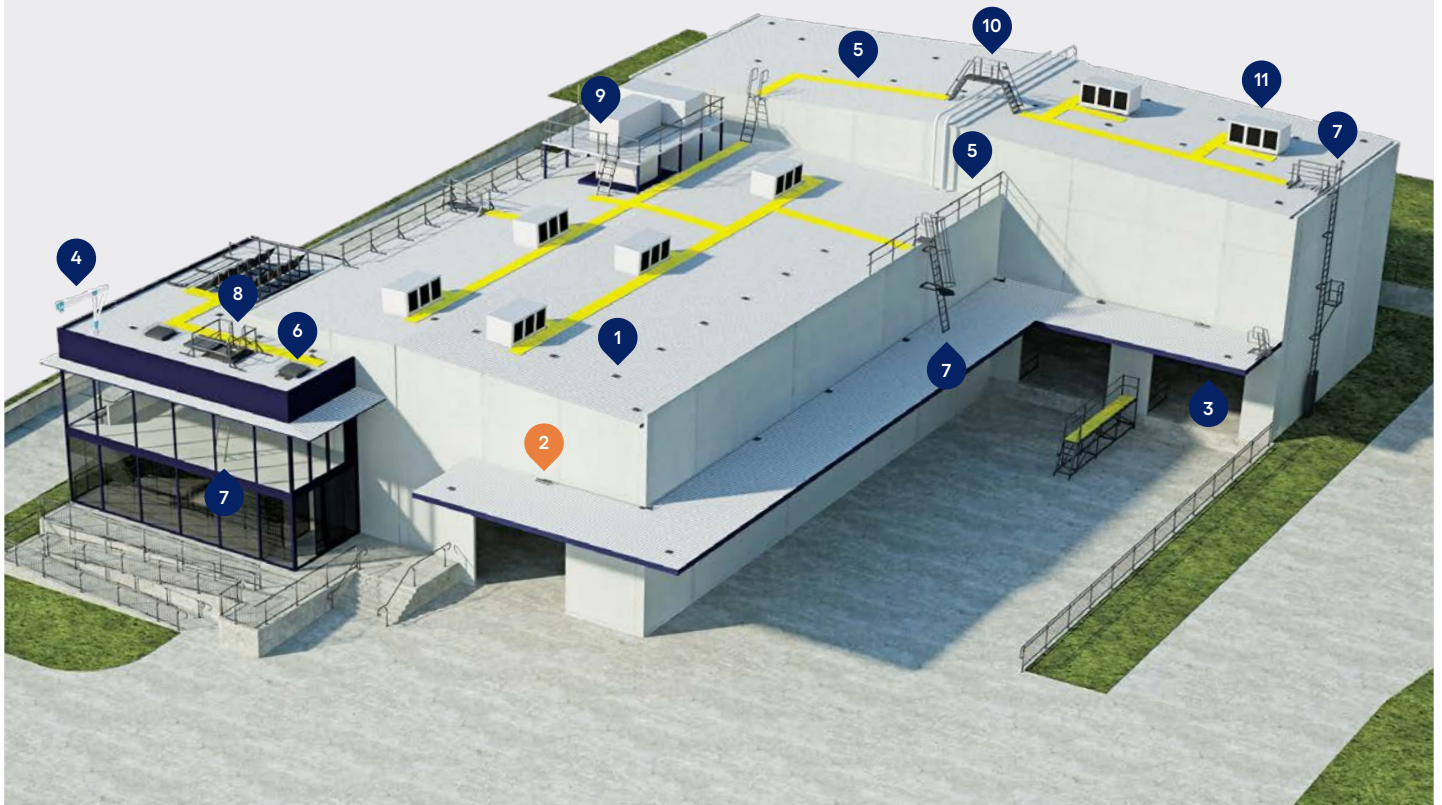
## Commercial building height access and fall protection requirements

Kattsafe leads the industry in the design, installation and management of access and fall protection safety systems.

The in-action model demonstrates access and fall protection requirements for a commercial building design. Kattsafe recommendations fulfill current workplace requirements for the safety of building maintenance subcontractors, employees and the general public.

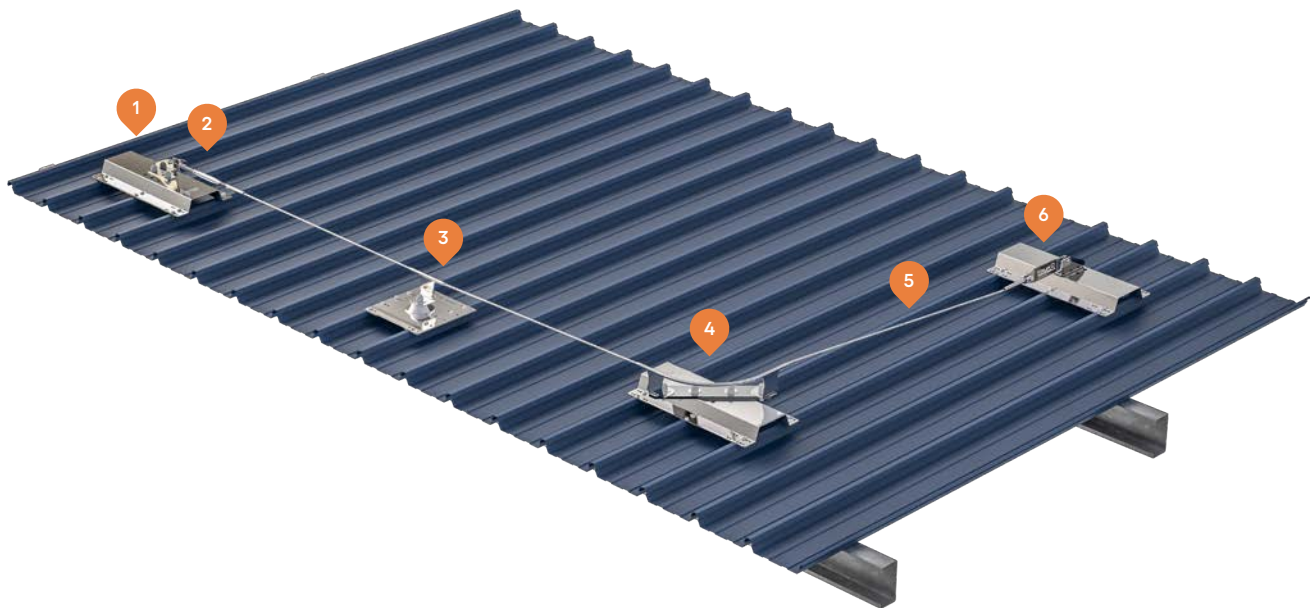
For more information please contact Kattsafe.  
[kattsafe.com.au](http://kattsafe.com.au)

- 1 Anchor points
- 2 **Static lines**
- 3 Rigid rail
- 4 Davits and needles
- 5 Guardrail and walkway
- 6 Skylight protectors
- 7 Rung ladders
- 8 Access hatches
- 9 Platforms and stairs
- 10 Step ladders
- 11 HVAC platforms



# STATIC LINES

Kattsafe static lines for personnel working at height using a fall arrest harness and lanyard system.



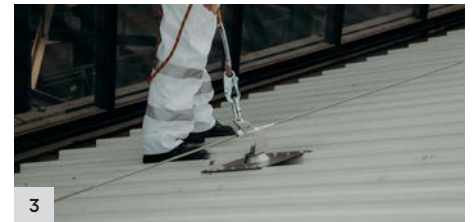
**End stanchion**

This provides a secure termination anchorage for the cable.



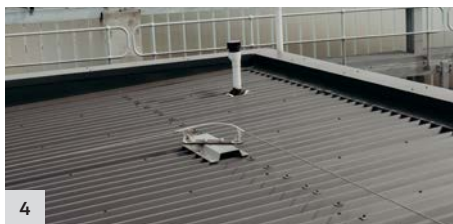
**Cable tensioner with indicator**

Ensures line tension can be adjusted after installation and during maintenance.



**Intermediate**

To support the cable and reduce forces on the end stanchions.



**Corner**

Supports a change in the direction of the cable.



**Traveller**

Providing smooth operation along the cable for the operator, and the fail safe cable locking feature on this unit ensures total user confidence when attached to the system.



**Energy absorber**

Designed to deploy under excessive load, limiting forces on the system and operator.



Static line is a permanent proprietary fall arrest system suitable for multiple users, in many different configurations.

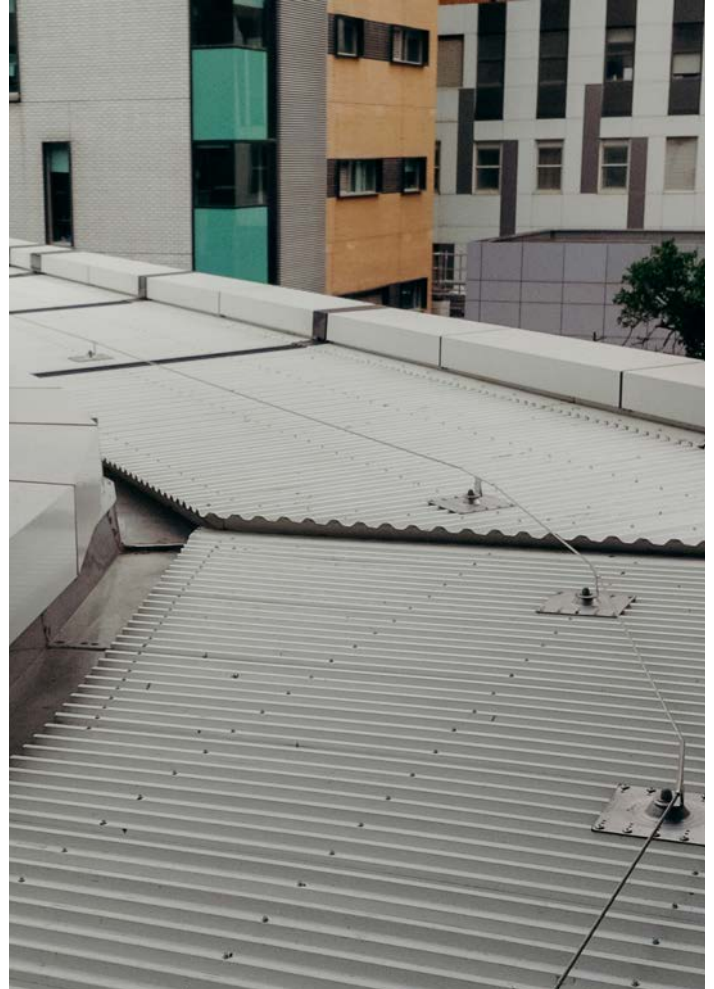
The static line system provides continuous attachment and effective fall protection across roof surfaces and other elevated areas to which safe access is required.

The system incorporates low profile, high quality components which can be used in horizontal, vertical and overhead applications using the required system traveller.

Installation of static line is simplified due to its use of modular components suited to a wide range of varying applications.

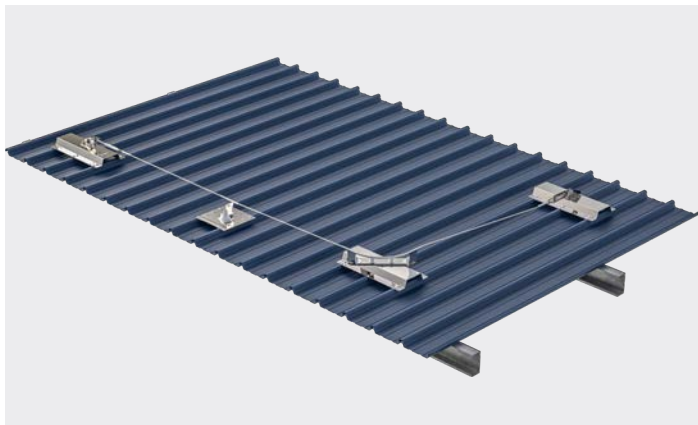
**Features and benefits of the system:**

- Fall arrest rated 22kN, multi user capability.
- Advanced energy absorbing technology.
- Smooth intermediate pass through system using the traveller.
- Various mounting options for multiple applications, including roof deck, steel, timber and concrete structures.
- Simple installation using modular components.
- Low profile with an option for powder coating.



# STATIC LINE CONFIGURATIONS

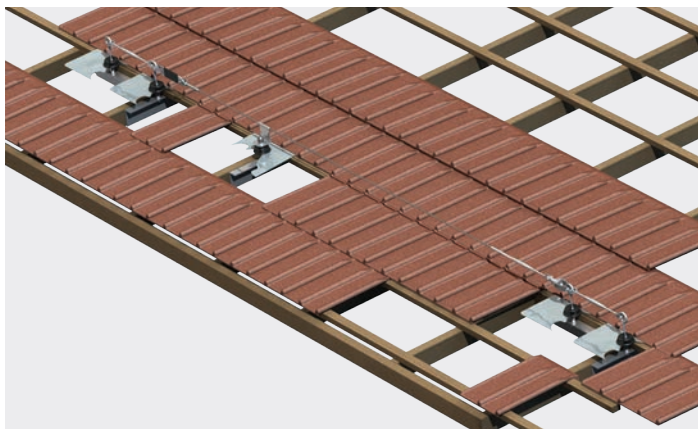
SL1 Metal deck static line system



SL2 Concrete mount static line system



SL4 Timber mount static line system



SL5 Wall mount static line system



SL6 Concrete mount static line system - raised

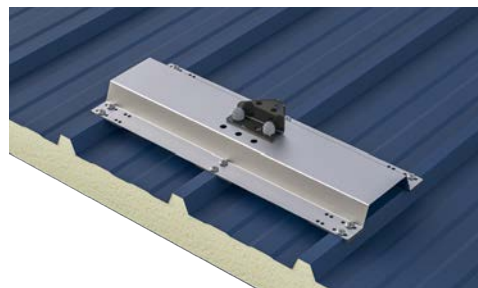


# STATIC LINE COMPONENTS

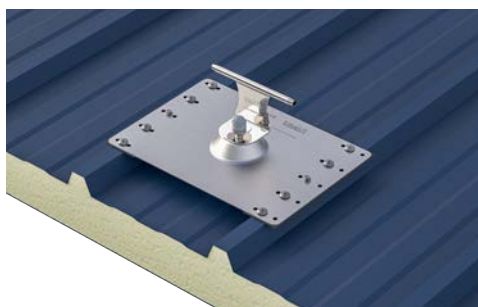
Anchorage cable



End stanchion



Intermediate



Corner



SL215 Energy absorber



SL213 Cable tensioner with indicator



Traveller



---

# TECHNICAL SPECIFICATION

## Static lines

Kattsafe static lines provide continuous attachment through intermediate connections points when using the a traveller, providing efficient fall protection for multiple users. System design, supply, layout, installation and certification by a Kattsafe approved installer, as per the manufacturer's installation instructions and current standards.

## Materials

Stainless steel profiled plate assembly including: end stanchions, intermediates, corners, cable and connection devices.

## Dimensions

- Attachment cable: 8mm (7 x 7 strand)
- Cable height off structure: 125 to 150mm

## Fixings (refer to installation manual)

- Metal fixing: M14 stainless steel stud fixing
- Concrete fixing: M12 mechanical concrete anchor
- Metal roof deck fixing: 8mm construction grade bulb type rivets

## Rating

- User weight limit: 120kg (user & equipment)
- Up to 4 users per line, determined by intermediate spacing and roof pitch
- Maximum roof pitch: 30° (across slope), 15° (with slope)
- Support structure integrity, suitability and fixing method to be assessed and determined by a competent person prior to installation
- Must only be used with the approved Kattsafe traveller device and harness system with energy absorber as per AS/NZS1891.1:2009 and AS/NZS1891.4:2009

## Compliance

Kattsafe static lines are designed to conform with requirements of the Australian and New Zealand Standards AS/NZS 5532:2013 AS/NZS/ISO22846 and AS/NZS1891 and relevant codes of practices and guidelines.

## Testing

Testing and performance based on requirements of Australian and New Zealand Standards AS/NZS 1891 and AS/NZS 5532.

## Product warranty

10 years from date of purchase subject to correct installation. Use and maintenance to be in accordance with manufacturer's specifications and recommendations. (This excludes wearing parts).

## Inspection and maintenance

Inspection and certification required every 12 months by competent person in accordance with manufacturer's specifications and requirements of Australian and New Zealand Standards AS/NZS 1891 and AS/NZS 5532. (Refer to installation manual).

## Important note

Failure to supply and/or install proprietary product in accordance with above standards and codes, specifications and instructions voids complete system certification and/or warranty.



---

# WARRANTY INFORMATION

Warranty period on this system:  
10 years from date of purchase

**Should you have a warranty claim as a result of a defect the following procedure must be followed:**

Identify the following information:

- The product/system name and code number.
- The date of purchase/installation.
- Installation company details.
- The installation identification number.
- The name of the company using this system.
- A description of the defect/warranty claim.
- The periodic system maintenance report.

Forward the above information to [sales@kattsafe.com.au](mailto:sales@kattsafe.com.au) or contact technical helpline, 1300 301 755.

## Terms and conditions

All warranty claims must be made in writing within 14 days of the appearance of the defect.

Incorrect installation or work done by a non accredited Kattsafe system installer will void all warranty rights.

Systems that have been installed using non proprietary equipment will void all warranties.

System roof/cladding and concrete penetration seals are not covered in this warranty.

Systems/components that have not been maintained in accordance with manufacturer's/legislative requirements will void warranty.

Systems used by incompetent persons or use with non compatible accessories ie. harness gear, lanyards, travellers, fall arrestors etc. will void warranty.

Systems/components used for purposes other than their intended use will void warranty.

General wear and tear is expected and will depend on the frequency of use and is not covered by warranty.



---

**Product brochure**  
Static lines



---

**Installation manual**  
Static lines



---

**Operation manual**  
Static lines



---

**QMS Certification**  
ISO 9001:2015

Find all related products and resources on our website.  
[kattsafe.com.au](https://kattsafe.com.au)

# Kattsafe

Height access  
and fall protection

1029 Mountain Highway  
Boronia Victoria 3155  
Australia

1300 301 755  
[sales@kattsafe.com.au](mailto:sales@kattsafe.com.au)  
[kattsafe.com.au](https://kattsafe.com.au)